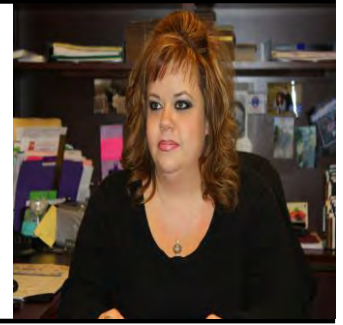




TAX DOLLARS

\$\$ TREASURER'S REPORT \$\$



August 2016 Report To: Citizens of San Miguel County
By: Bertha C. Bustamante, San Miguel County Treasurer

&

Jennifer LaFebre, Tax Processor III

MONTHLY DISTRIBUTIONS FOR:

August 2016

Entity	Amount
West Las Vegas Schools	\$ 31,640.07
East Las Vegas Schools	\$ 28,527.08
Pecos Independent Schools	\$ 6,367.62
Santa Rosa Schools	\$ 27.29
Luna Community College	\$ 11,871.01
City of Las Vegas (Gen)	\$ 12,549.56
Village of Pecos	\$ 154.03
Tierras Y Montes	\$ 5,611.87
MESA	\$ -
Guadalupe (Soil Water)	\$ -
Ute Creek	\$ -
N. M. State Treasurer	\$ 8,647.15
San Miguel County	
Current Taxes	\$ 30,395.00
Prior Year's Taxes	\$ 12,060.91
Penalty & Interest	\$ 17,594.33
Administrative Fees	\$ 62.55
Soil Water Districts (Fee)	\$ 233.83
1% Collection Fees	\$ 1,007.92
N.M. Taxation & Revenue	
Penalty & Interest	\$ 8,310.03
Cost of State	\$ 2,632.82
Children's Trust Fund	\$ 120.00
GRAND TOTAL	\$ 177,813.07

As of **August 2016**, the San Miguel County Treasurer's Office has collected the following amounts and percentages of the anticipated total collections* for the years listed below:
***Subject to Adjustments in Valuations...**

Year	Amounts Collected	Percentage
2015	\$12,861,520.09	88%
2014	\$13,242,977.07	93%
2013	\$13,528,079.06	96%
2012	\$13,158,542.28	97%
2011	\$12,717,561.90	98%
2010	\$13,199,733.59	98%
2009	\$11,256,182.51	98%
2008	\$10,861,020.05	98%
2007	\$10,369,286.37	98%
2006	\$9,782,777.83	98%
10 YR.	\$120,977,680.75	TOTAL

REMINDER: The 2015 Property Taxes were mailed out to the San Miguel County Taxpayers on November 1, 2015. The 1st Half was due on November 10, 2015 and became Delinquent on December 11, 2015. The 2nd half was due on April 10, 2016 and became Delinquent on May 11, 2016.. Please keep your Property Account(s) "current" to avoid paying Penalty and Interest or "possibly" having the State "auction your property(s)"...

www.smccounty.net/treasurer.htm

"Thank You"

Distributions will be mailed on:
September 15, 2016